

REDSHANK

Coast & Heaths
Area of Outstanding
Natural Beauty
- Flagship Species -



Suffolk
Coast &
Heaths



Area of Outstanding Natural Beauty



Essex
Wildlife Trust



giving
nature
a home

This project is supported by funding from Natural England.

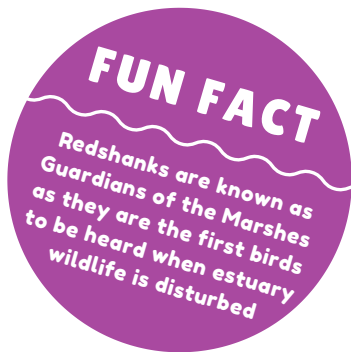
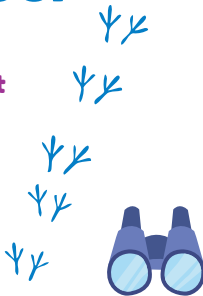
REDSHANKS NEED YOU!

Redshanks breed, feed and nest along the tidal rivers of Suffolk & Essex, but the UK's redshank population has declined by 44% in the last 25 years.

Redshanks are vulnerable to disturbance throughout the year - when they are trying to breed and when they are feeding.

How you can help:

- ✓ Never get within 75 metres of redshank when on land or water
- ✓ Keep dogs off mudflats
- ✓ Keep dogs on leads when directed by signs
- ✓ Always stick to footpaths



How to spot a redshank:

- ✓ Medium sized, noisy wader
- ✓ Brownish upper body with paler speckled belly
- ✓ Straight beak with black tip and an orange/red base
- ✓ Orange/red legs