

Snape Maltings and the village of **Snape** are an ideal base from which to explore this fascinating part of the **Suffolk & Essex Coast & Heaths National Landscape**.

Signs of habitation around the **River Alde** date back to at least Roman times. Today, **Snape** village remains a thriving rural community.

Highlights

1 Snape Maltings was built in the mid-19th century and was once one of the largest barley maltings in Suffolk. It was located at the head of the estuary as barges were able to navigate as far as Snape, providing easy transportation in an era before road transport.

Since its closure as a maltings in 1965, the site has developed into a unique, internationally renowned music, art, leisure and shopping complex beloved by locals and visitors alike.

2 The River Alde is little more than a stream until it nears Snape Maltings, where the river becomes tidal and broadens into a wide estuary. It's a place of glistening mud and open water, filled twice a day by the incoming tide and rich in wildlife.

The countryside here is highly characteristic of the National Landscape, an intimate mosaic of wetland, woodland, farmland and heath that makes the area so special and deservedly recognised as one of Britain's finest landscapes.

3 The Landscape in Snape is mixed. The higher ground on either side of the river is part of the Sandlings plateau, a narrow band of light, sandy soil that runs roughly from Southwold to the eastern fringe of Ipswich.

The sandy soils were unsuitable for intensive agriculture, so sheep grazing dominated for many centuries. This led



to the development of large expanses of heathland, a landscape of grassland, scattered trees and heather through which huge flocks of sheep roamed.

The valley floor has always been more fertile and in places land has been claimed from the river for cultivation and grazing. Some of the walls protecting these areas were destroyed by the infamous 1953 flood. The remains of these defences still reach out into the estuary.

4 Wildlife is abundant in Snape with the Alde Estuary, in particular being vitally important for migratory wading birds and wildfowl. It is a Site of Special Scientific Interest (SSSI) and, because of its international significance, a Special Protection Area (SPA) and Ramsar wetland site.

At low tide, wading birds feed on the exposed mud. Down the Estuary towards Aldeburgh, heathland brings with it its own species. By visiting Snape at different times of the year, you can enjoy a wonderful wildlife spectacle that changes with the passing seasons.

5 The Sailsors' Path is a popular, easy-to-follow walking path in Suffolk, combining Snape and Snape Maltings with the beloved coastal town of Aldeburgh. Walk in the footsteps of the seafarers who travelled from the Suffolk coast to the village of Snape via this six-mile route.



The Suffolk & Essex Coast & Heaths National Landscape

The Suffolk & Essex Coast & Heaths National Landscape stretches from Kessingland near Lowestoft, down to Parkeston near Harwich on the Stour Estuary in North Essex. It is one of Britain's finest landscapes, nationally important for wildlife and beloved by residents and visitors alike.

The National Landscape conserves and enhances the natural beauty of the area through nature enhancement, landscape restoration, creating habitats for wildlife, volunteering activities such as beach cleans and hedge planting, and providing funding for community projects.



Scan the QR code to find out more about the Suffolk & Essex Coast & Heaths National Landscape or you can visit coastandheaths-NL.org.uk. Get in touch on **01394 445225**.

Key to map

- National Landscape area (Estuaries are also included)
- Additional project area
- Town and villages
- Woodland
- Heathland
- Main roads
- Railways/stations
- Suffolk Coast Path
- Stour and Orwell Walk
- Sandlings Walk



Snape Explorer Guide



Visiting Snape

Ordnance Survey Explorer Map No. 212 (Woodbridge and Saxmundham)

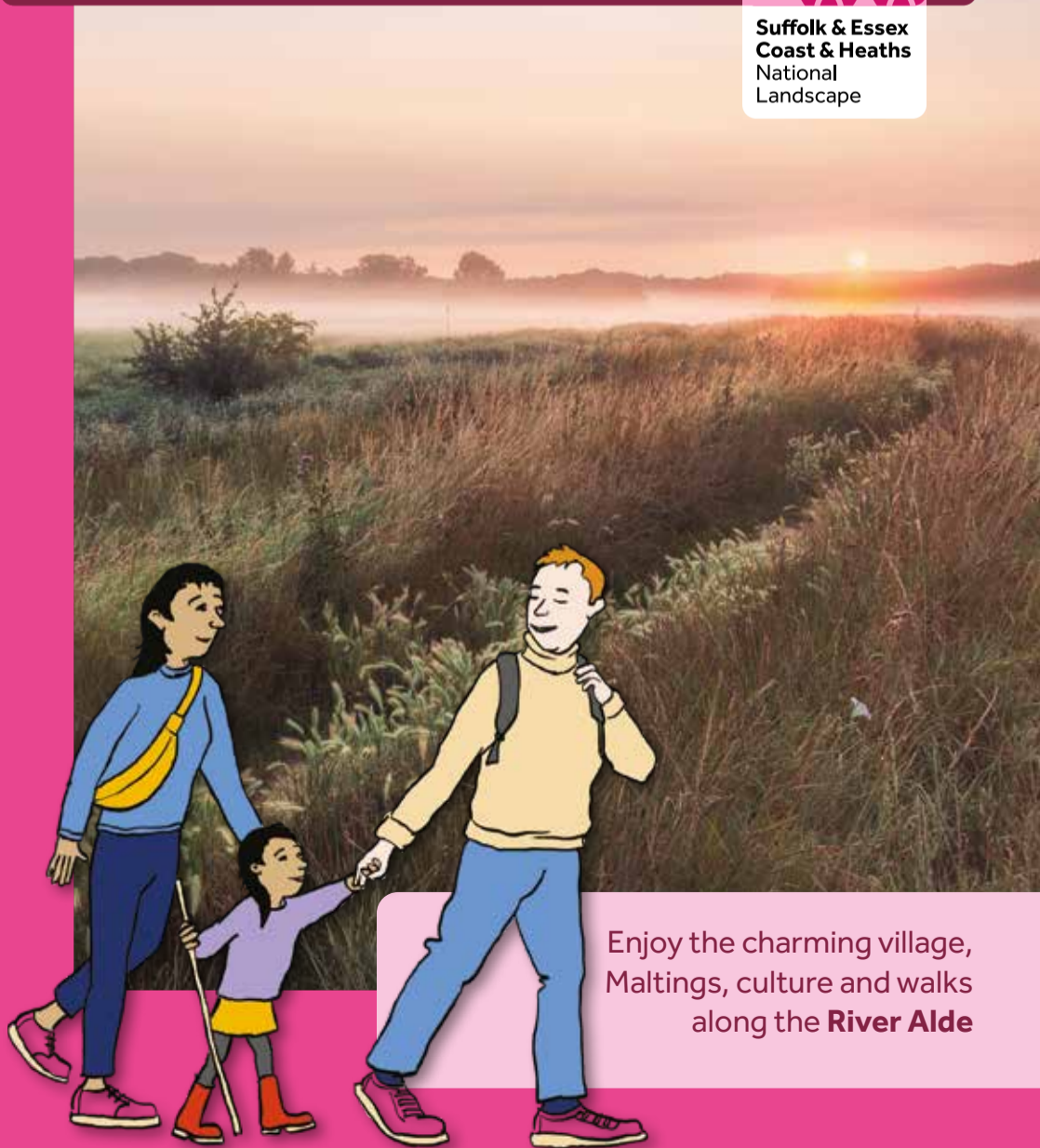
Car: Easy access via the A12, A1094 and B1069. Parking available at Snape Maltings

Bus information: Visit traveline.info or suffolkonboard.com

Train information: The nearest station is Wickham Market (5 miles away). Train timetable at nationalrail.co.uk



Crown copyright. All rights reserved. Suffolk County Council Licence 2024. Licence number LA10023395



Enjoy the charming village, Maltings, culture and walks along the **River Alde**

Snape Explorer Guide

These two trails head in different directions, one to the north of the River Alde and one to the south.



Walk to the Warren

Terrain: Easy – Ground under foot fairly flat, part of route on minor public road, one stile. Please be aware of traffic.

Distance: 2 miles (3.2 km)
Time: 45 minutes

From the Plough and Sail pub in front of Snape Maltings, cross Snape Bridge and turn right onto the grassy embankment with the river Alde on your right. This lovely circular walk follows the bank of the river, winding through grazing marsh, reed beds and marshy scrub until it reaches Snape Warren.

Here, the trail turns left, following a path through the wood for about 250m, before turning left once more. Continue through marshland heading towards Snape village. If path is very muddy, retrace to previous path. Turn left to reach the road and turn left. Walk along road to village to re-join the route.



Turn right on the track and left at the minor road. At the main road in the centre of Snape turn left and follow the road back to Snape Maltings.



River's Edge Ramble

Terrain: Easy – Ground under foot fairly flat.

Distance: 2 miles (3.2 km)
Time: 45 minutes

This walk begins from the car park in the south eastern corner of the Maltings complex, beyond the music school building. Follow the footpath across open farmland and then over a short, wooden boardwalk.

Continue past a small area of scrub before crossing a longer boardwalk through a reedbed. After the boardwalk, the path continues through a small area of saltmarsh (please be aware that this section can flood during very high tides). Cross farmland once more to reach the end of the trail at Iken picnic site.



Extended Walk

This walk can be extended by continuing along the riverside footpath beyond the picnic site. This provides excellent views of the river, its birdlife and Iken Church in the distance. The footpath can be extremely muddy in places particularly in the winter.

You can walk all the way to the church by following the footpath when it turns away from the river to the public road. Turn left along the road and first left along Church Lane.

Do not try to walk all the way to the Church along the river. Part of the route is on a minor public road. Please be aware of traffic.

We recommend that some type of high visibility clothing is worn. Allow an extra 1 hour. Distance 3 miles (5 km).



Extended Walk

The walk can easily be extended by adding a loop around Snape Warren, following the footpaths through the woods, foreshore and heathland.

Allow an extra 15 minutes, plus more for bird watching.



Countryside Code

The Suffolk & Essex Coast & Heaths National Landscape has a network of footpaths and bridleways.

To protect you, other people, wildlife, and the landscape, please make sure you:

- Stick to marked footpaths
- Leave things as you find them
- Do not light fires or BBQs
- Take all litter home with you
- Please keep dogs under close control at all times and on lead as advised

Scan the QR code to find more advice and visitor guides, or visit



coastandheaths-nl.org.uk/exploring.